

Peterborough Children's Services

"Helping children and young people to be their best"



69

FINAL

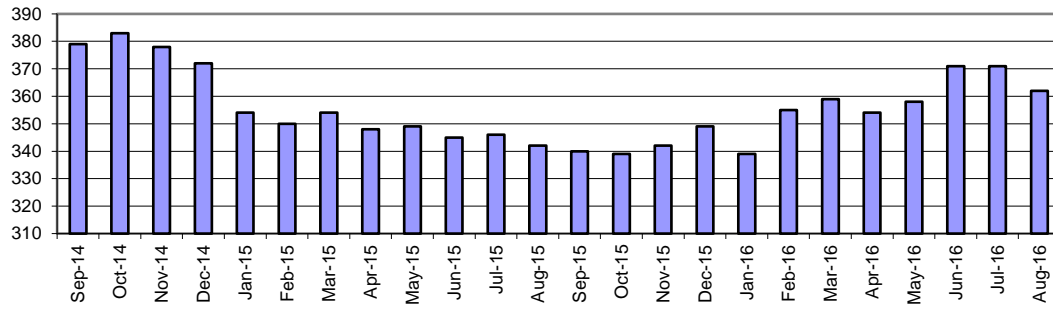


Contents		Latest Published	SN Avg	ENG Avg	Target	Latest Data		Dir. of travel	Polarity	Page Number
						Actual	RAG			
Benchmarking	Eastern region benchmarking analysis									2
Children in Care	Number of Children in Care per 10,000	74.0	79.4	60.0	74.0	77.7	A	↓	Smaller is better	24
	Admissions of Children in Care per 10,000	36.2	29.7	26.5	38.0	42.7	0	↑	-	25
	Number of Children who have ceased to be Children in Care per 10,000	32.9	30.1	26.5	38.0	37.8	0	↓	-	26
	Number of Children in Care				345	362	G	↑	Proximity to target	27
	Placement Stability: 3 or more placements during previous 12 months for CiC	8.5%	11.3%	11.0%	9.5%	6.6%	G	↑	Smaller is better	28
	Placement Stability: Length of Placement for Children in Care	73.0%	69.1%	67.0%	71.0%	66.2%	G	↑	Bigger is better	29
	Children in Care Reviews held within timescales	98.7%			100.0%	99.7%	A	↑	Bigger is better	30
	Children in care statutory visits in time				95.0%	89.8%	R	↑	Bigger is better	31
	Percentage of children adopted	19.0%	24.0%	17.0%	20.0%	12.5%	A	↓	Bigger is better	32
	Average days between child entering care and moving in with a adoptive family	593	616	628	487	408	G	=	Smaller is better	33
	Average days between court agreeing adoption and LA approving a match	242	211	217	120	216	R	=	Smaller is better	34
	Children in care - Missing from care					16		↑	-	35
	Initial health assessments completed within 20 working days of child entering care				95.0%	51.4%	R	↑	Bigger is better	36
	Health of Children in Care - Annual Health Assessments	93.9%	89.1%	88.4%	95.0%	89.8%	A	↑	Bigger is better	37
	Children in care (aged 3-17 years) with dental checks held within previous 12 months				95.0%	70.2%	R	↑	Bigger is better	38
	Personal Education Plans (PEPs)				95.0%	98.8%	G	↑	Bigger is better	39
	Leaving care cases with a pathway plan that has been updated within the last 6 months					54.9%			Bigger is better	40
Care leavers (+19 years) - Not in Education, Employment and Training					39.3%			Smaller is better	41	
Care leavers (+19 Years) - Not in Suitable Accommodation					10.1%			Smaller is better	42	

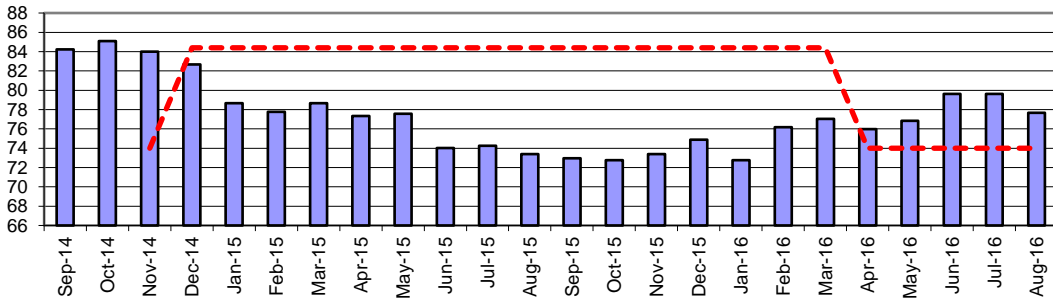
Select Year	2015/16
Select Quarter	Q4

When selecting Year 2012/13 or 2013/14 please also select Quarter Q4 to display performance data

Indicators	Bedford (B)	Cambridgeshire County	Central Bedfordshire	City of Peterborough (B)	Essex County	Hertfordshire County	Luton (B)	Norfolk County	Southend-on-Sea (B)	Suffolk County	Thurrock (B)	National 2015	Polarity	Top of Range	Bottom of Range
	4.1 Children who had three or more placement changes in the year [Definition: old NI62]	7.03%	12.3%	11.9%	8.4%	10.2%	13.2%	10.2%	5.2%	10.3%	12.5%	8.2%	10%	Smaller is Better	5.2%
4.2 Avg. days between child entering care and moving in with a adoptive family	568.5	363.0	421.2	374.0	481.0	469.0	620.5	350.9	335.6	367.0	717.4	593	Smaller is Better	335.6	717.4
4.3 Avg. days between court agreeing adoption and LA approving a match	241.4	173.0	173.9	178.0	157.5	216.0	322.1	150.4	119.4	176.8	68.5	223	Smaller is Better	68.5	322.1
4.4 % leaving care who are adopted	10.7%	13.9%	16.8%	35.7%	12.4%	12.4%	10.5%	15.1%	23.6%	19.6%	13.4%	17%	Bigger is Better	35.7%	10.5%
4.5 % LAC adopted in year placed within 12 months of decision	30.8%	81.6%	82.4%	70.0%	81.3%	60.7%	55.6%	70.8%	92.0%	81.1%	17.6%	N/A	Bigger is Better	92.0%	17.6%



■ CiC -No of children in Care - monthly



■ Rate of children in care per 10,000

--- Target

Month	CiC -	Pop.	Rate of
Sep-14	379	45000	84.2
Oct-14	383	45000	85.1
Nov-14	378	45000	84.0
Dec-14	372	45000	82.7
Jan-15	354	45000	78.7
Feb-15	350	45000	77.8
Mar-15	354	45000	78.7
Apr-15	348	45000	77.3
May-15	349	45000	77.6
Jun-15	345	46600	74.0
Jul-15	346	46600	74.2
Aug-15	342	46600	73.4
Sep-15	340	46600	73.0
Oct-15	339	46600	72.7
Nov-15	342	46600	73.4
Dec-15	349	46600	74.9
Jan-16	339	46600	72.7
Feb-16	355	46600	76.2
Mar-16	359	46600	77.0
Apr-16	354	46600	76.0
May-16	358	46600	76.8
Jun-16	371	46600	79.6
Jul-16	371	46600	79.6
Aug-16	362	46600	77.7

Target	Variance	RAG
74.0	13.8%	R
74.0	15.0%	R
74.0	13.5%	R
84.4	-2.1%	R
84.4	-6.8%	A
84.4	-7.8%	A
84.4	-6.8%	A
84.4	-8.4%	A
84.4	-8.1%	A
84.4	-12.3%	A
84.4	-12.0%	A
84.4	-13.0%	A
84.4	-13.6%	A
84.4	-13.8%	A
84.4	-13.0%	A
84.4	-11.3%	A
84.4	-13.8%	G
84.4	-9.7%	A
84.4	-8.7%	A
74.0	2.7%	A
74.0	3.8%	A
74.0	7.6%	A
74.0	7.6%	A
74.0	5.0%	A

CSC Commentary

The number of CiC at the end of August 2016 has decreased by 9 to 362. This is after an increase in numbers for three consecutive months April, May, June. Although this is above the target rate of 74 it remains in the amber RAG rating and indicates that measures to curb the rise in the care population are beginning to have an early impact.

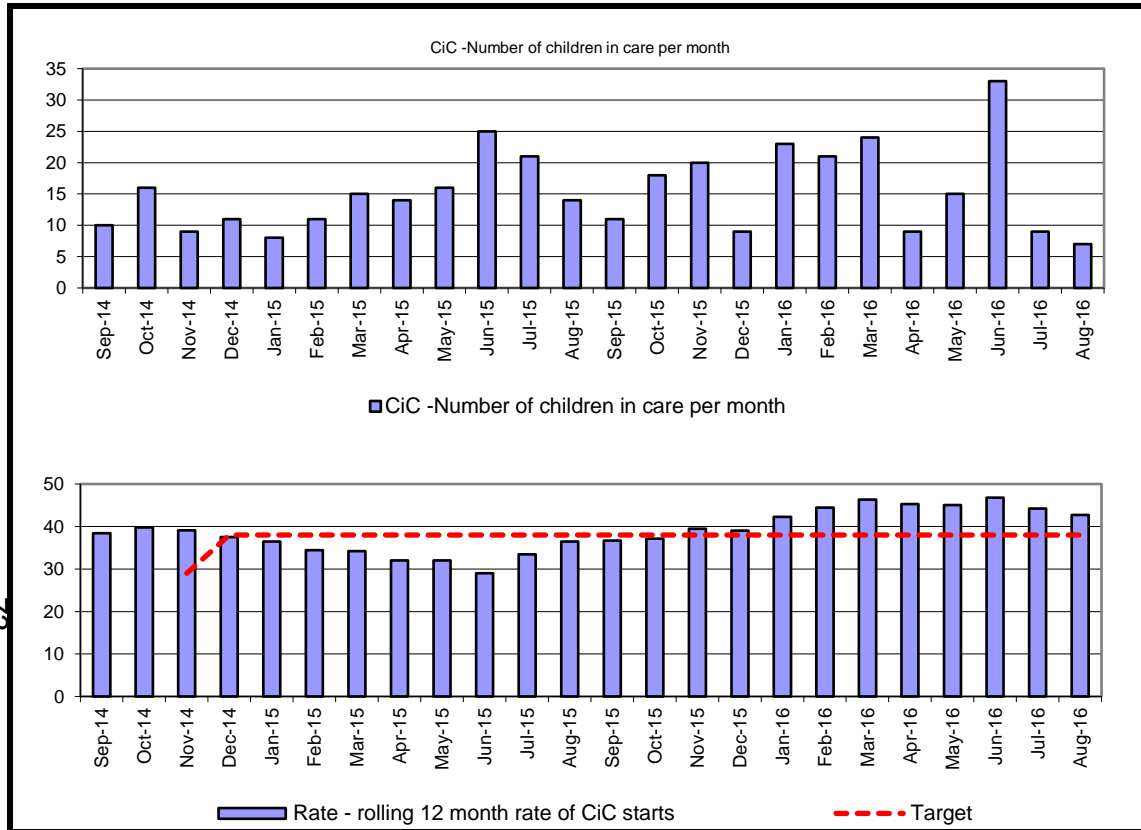
Definition

Number of children in care divided by the population of 0-17 year olds in Peterborough multiplied by 10,000
 The number of children in care is taken as a snapshot count at the end of each month
 Population for denominator: 46600

G = 74.0	A > 74.0	R > 79.4
-----------------	--------------------	--------------------

Year	PCC Result	SN Result	ENG Result
2012-13	78.0	78.0	60.0
2013-14	80.0	77.2	60.0
2014-15	74.0	79.4	60.0

72



Month	CiC -	12 Mths	Rate	Target	Variance	RAG
Sep-14	10	173	38.4	29.0	32.6%	
Oct-14	16	179	39.8	29.0	37.2%	
Nov-14	9	176	39.1	29.0	34.9%	
Dec-14	11	169	37.6	38.0	-1.2%	
Jan-15	8	164	36.4	38.0	-4.1%	
Feb-15	11	155	34.4	38.0	-9.4%	
Mar-15	15	154	34.2	38.0	-9.9%	
Apr-15	14	94	32.0	38.0	-15.8%	
May-15	16	110	32.0	38.0	-15.8%	
Jun-15	25	135	29.0	38.0	-23.8%	
Jul-15	21	156	33.5	38.0	-11.9%	
Aug-15	14	170	36.5	38.0	-4.0%	
Sep-15	11	171	36.7	38.0	-3.4%	
Oct-15	18	173	37.1	38.0	-2.3%	
Nov-15	20	184	39.5	38.0	3.9%	
Dec-15	9	182	39.1	38.0	2.8%	
Jan-16	23	197	42.3	38.0	11.2%	
Feb-16	21	207	44.4	38.0	16.9%	
Mar-16	24	216	46.4	38.0	22.0%	
Apr-16	9	211	45.3	38.0	19.2%	
May-16	15	210	45.1	38.0	18.6%	
Jun-16	33	218	46.8	38.0	23.1%	
Jul-16	9	206	44.2	38.0	16.3%	
Aug-16	7	199	42.7	38.0	12.4%	

CSC Commentary

Admissions into care have decreased for the second month in a row. They have dropped from 33 in June to only 7 in August and there has been a commensurate decrease in the variance rate from our target from 46.8 to 42.7. While this is still above our actual target, it marks a major slow down in our admissions and indicates that measures to improve gate keeping processes are having a positive effect.

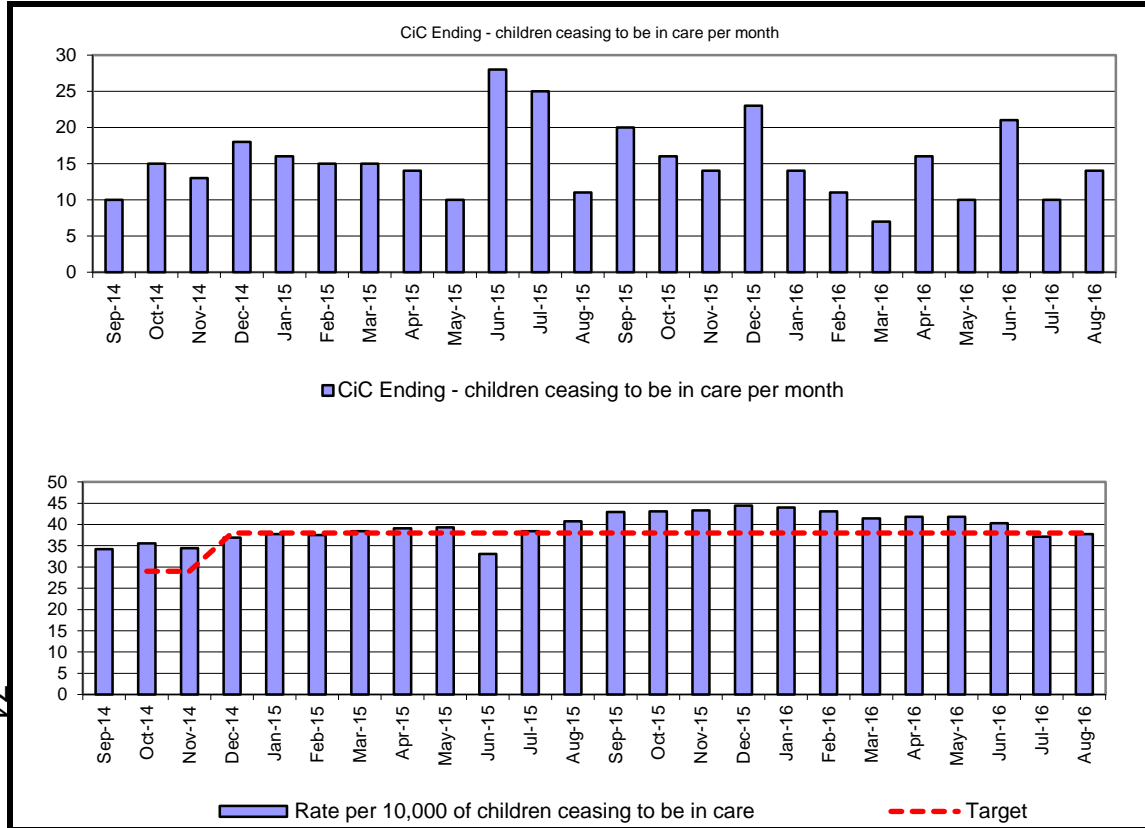
Definition

Children who came into care (rolling 12 months) divided by the population of 0-17 year olds in Peterborough multiplied by 10,000. If a child is admitted to care on more than one occasion then each time is counted in this indicator.

Population for denominator: 46600



Year	PCC Result	SN Result	ENG Result
2012-13	31.8	30.8	25.3
2013-14	36.2	29.7	26.5
2014-15	30.0	34.2	26.8



Month	CiC Ending - children ceasing to be in care per month	12 Mths children ceasing to be in care	Rate per 10,000 children ceasing to be in care	Target	Variance	RAG
Sep-14	10	154	34.2	29.0	18.0%	
Oct-14	15	160	35.6	29.0	22.6%	
Nov-14	13	155	34.4	29.0	18.8%	
Dec-14	18	166	36.9	38.0	-2.9%	
Jan-15	16	170	37.8	38.0	-0.6%	
Feb-15	15	169	37.6	38.0	-1.2%	
Mar-15	15	173	38.4	38.0	1.2%	
Apr-15	14	116	39.1	38.0	2.9%	
May-15	10	126	39.3	38.0	3.5%	
Jun-15	28	154	33.0	38.0	-13.0%	
Jul-15	25	179	38.4	38.0	1.1%	
Aug-15	11	190	40.8	38.0	7.3%	
Sep-15	20	200	42.9	38.0	12.9%	
Oct-15	16	201	43.1	38.0	13.5%	
Nov-15	14	202	43.3	38.0	14.1%	
Dec-15	23	207	44.4	38.0	16.9%	
Jan-16	14	205	44.0	38.0	15.8%	
Feb-16	11	201	43.1	38.0	13.5%	
Mar-16	7	193	41.4	38.0	9.0%	
Apr-16	16	195	41.8	38.0	10.1%	
May-16	10	195	41.8	38.0	10.1%	
Jun-16	21	188	40.3	38.0	6.2%	
Jul-16	10	173	37.1	38.0	-2.3%	
Aug-16	14	176	37.8	38.0	-0.6%	

CSC Commentary

14 children ceased to be looked after this month and this maintains the downward trend of children exiting the care system. While this marks a decrease in the actual number of children leaving the care population, it continues to move us closer to our target rate of 38, which currently we exceed by a variance of -4.6%.

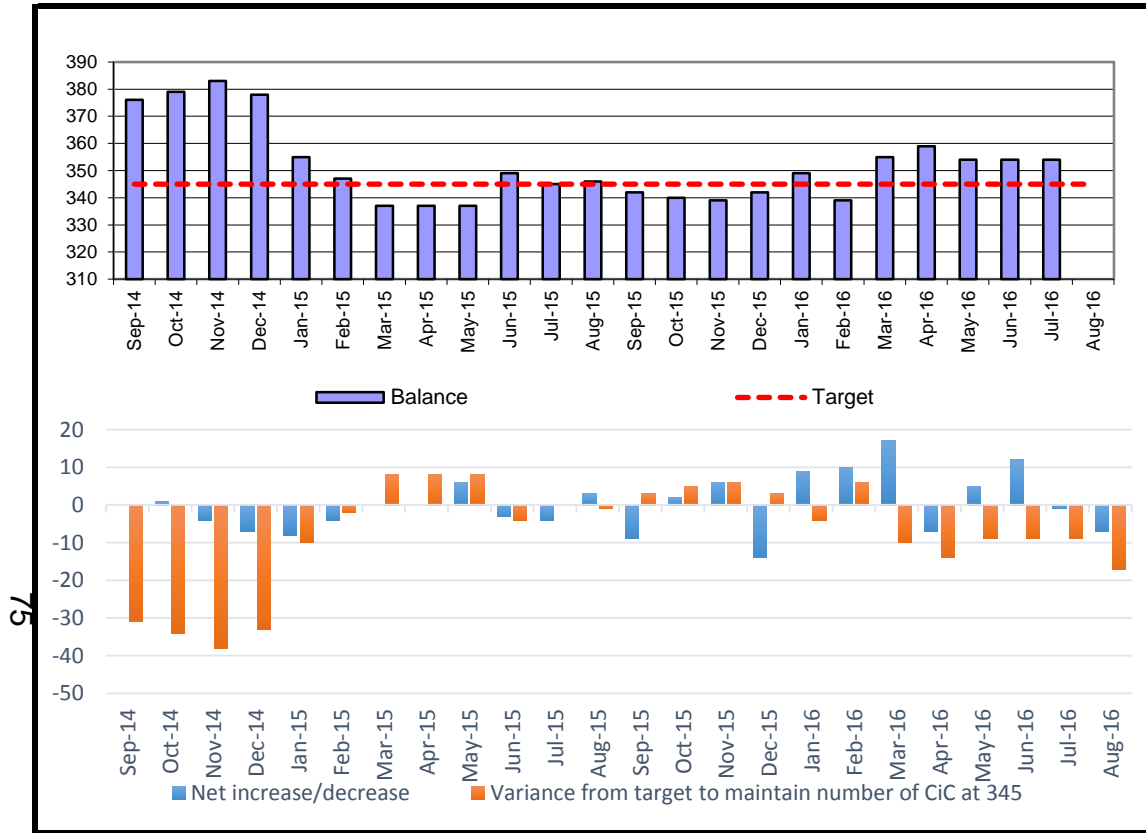
Definition

Number of children who ceased to be in care (rolling 12 months) divided by the population of 0-17 year olds in Peterborough multiplied by 10,000. If a child ceased to be in care on more than one occasion then each time is counted in this indicator.

Population for denominator: 46600



Year	PCC Result	SN Result	ENG Result
2012-13	30.7	28.7	25.0
2013-14	32.9	30.1	26.5
2014-15	35.4	32.3	26.8



Month	CiC Start	CiC End	Net i	Balance
Sep-14	10	10	0	#
Oct-14	16	15	1	#
Nov-14	9	13	-4	#
Dec-14	11	18	-7	#
Jan-15	8	16	-8	#
Feb-15	11	15	-4	#
Mar-15	15	15	0	#
Apr-15	14	14	0	#
May-15	16	10	6	#
Jun-15	25	28	-3	#
Jul-15	21	25	-4	#
Aug-15	14	11	3	#
Sep-15	11	20	-9	#
Oct-15	18	16	2	#
Nov-15	20	14	6	#
Dec-15	9	23	-14	#
Jan-16	23	14	9	#
Feb-16	21	11	10	#
Mar-16	24	7	17	#
Apr-16	9	16	-7	#
May-16	15	10	5	#
Jun-16	33	21	12	#
Jul-16	9	10	-1	354
Aug-16	7	14	-7	362

Month	Target	Variance	RAG
Sep-14	345.0	-31	G
Oct-14	345.0	-34	G
Nov-14	345.0	-38	R
Dec-14	345.0	-33	R
Jan-15	345.0	-10	R
Feb-15	345.0	-2	R
Mar-15	345.0	8	R
Apr-15	345.0	8	R
May-15	345.0	8	R
Jun-15	345.0	-4	R
Jul-15	345.0	0	A
Aug-15	345.0	-1	G
Sep-15	345.0	3	G
Oct-15	345.0	5	G
Nov-15	345.0	6	G
Dec-15	345.0	3	G
Jan-16	345.0	-4	G
Feb-16	345.0	6	G
Mar-16	345.0	-10	G
Apr-16	345.0	-14	G
May-16	345.0	-9	G
Jun-16	345.0	-9	G
Jul-16	345.0	-9	G
Aug-16	345.0	-17	G

CSC Commentary

The number of children who started to be looked after this month is 7 with 14 children ceasing to be in care. This marks a positive improvement in performance, indicating our early progress in reducing the number of children entering the care population.

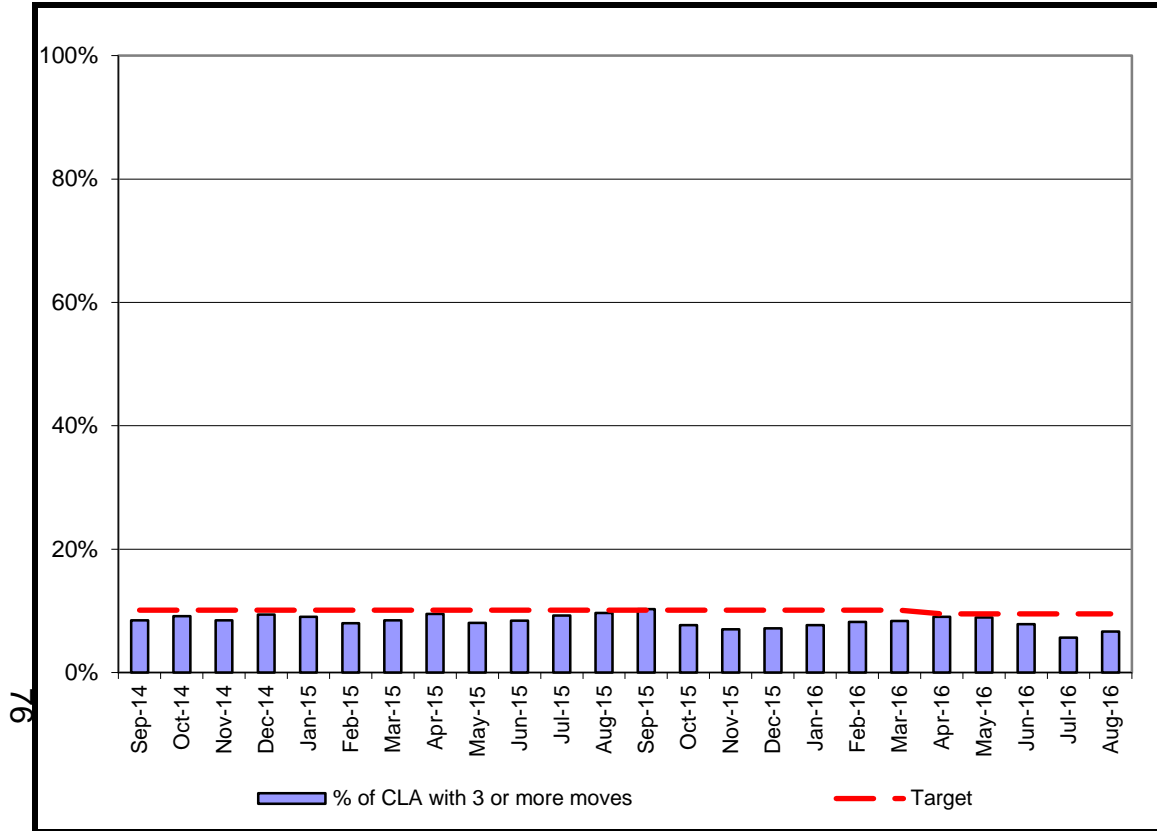
Definition

Net change in the number of children in care

Population for denominator: 46600

G = 345 **A = +/-20** **R = +/-30**

Year	PCC Result	SN Result	ENG Result
2012-13	71.5	54.3	46.2
2013-14	55.7	64.7	52.1
2014-15			



Month	Num.	Denom.	% of CLA with	Target	Variance	RAG
Sep-14	32	379	8.4%	10.1%	-1.7	G
Oct-14	35	383	9.1%	10.1%	-1.0	G
Nov-14	32	378	8.5%	10.1%	-1.6	G
Dec-14	35	372	9.4%	10.1%	-0.7	G
Jan-15	32	354	9.0%	10.1%	-1.1	G
Feb-15	28	350	8.0%	10.1%	-2.1	G
Mar-15	30	354	8.5%	10.1%	-1.6	G
Apr-15	33	348	9.5%	10.1%	-0.6	G
May-15	28	349	8.0%	10.1%	-2.1	G
Jun-15	29	345	8.4%	10.1%	-1.7	G
Jul-15	32	346	9.2%	10.1%	-0.9	G
Aug-15	33	342	9.6%	10.1%	-0.5	A
Sep-15	35	340	10.3%	10.1%	0.2	A
Oct-15	26	339	7.7%	10.1%	-2.4	G
Nov-15	24	342	7.0%	10.1%	-3.1	G
Dec-15	25	349	7.2%	10.1%	-2.9	G
Jan-16	26	339	7.7%	10.1%	-2.4	G
Feb-16	29	355	8.2%	10.1%	-1.9	G
Mar-16	30	359	8.4%	10.1%	-1.7	G
Apr-16	32	354	9.0%	9.5%	-0.5	G
May-16	32	358	8.9%	9.5%	-0.6	G
Jun-16	29	371	7.8%	9.5%	-1.7	G
Jul-16	21	371	5.7%	9.5%	-3.8	G
Aug-16	24	362	6.6%	9.5%	-2.9	G

CSC Commentary

The downward trend in this indicator over the last few months has slipped slightly, however continues to demonstrate good performance. The percentage of children with 3 or more moves is now at 6.6%, which is a variance of 2.9 below our target and keeps this in the green RAG rating band.

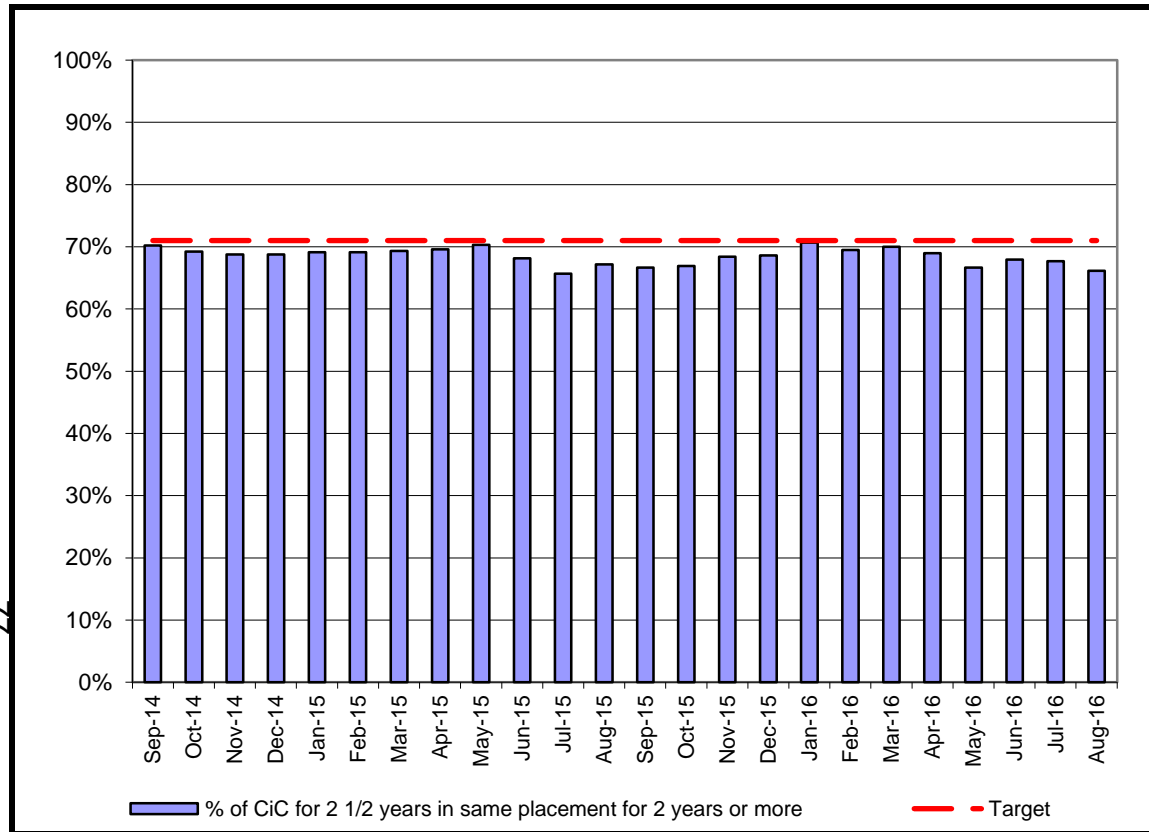
Definition

The percentage of children in care at any given time with three or more placements during the last 12 months.

Population for denominator: 46600

G = 9.5%	A> 9.5-11.3%	R>11.3
----------	--------------	--------

Year	PCC Result	SN Result	ENG Result
2012-13	11.1%	10.3%	11.1%
2013-14	9.0%	11.3%	11.0%
2014-15	8.5%		



Month	Num.	Denom.	% of CiC	Target	Variance	RAG
Sep-14	92	131	70.2%	71.0%	-0.8	A
Oct-14	90	130	69.2%	71.0%	-1.8	A
Nov-14	88	128	68.8%	71.0%	-2.3	R
Dec-14	88	128	68.8%	71.0%	-2.3	R
Jan-15	85	123	69.1%	71.0%	-1.9	R
Feb-15	94	136	69.1%	71.0%	-1.9	R
Mar-15	95	137	69.3%	71.0%	-1.7	R
Apr-15	96	138	69.6%	71.0%	-1.4	R
May-15	97	138	70.3%	71.0%	-0.7	A
Jun-15	92	135	68.1%	71.0%	-2.9	R
Jul-15	88	134	65.7%	71.0%	-5.3	R
Aug-15	90	134	67.2%	71.0%	-3.8	R
Sep-15	90	135	66.7%	71.0%	-4.3	R
Oct-15	93	139	66.9%	71.0%	-4.1	R
Nov-15	93	136	68.4%	71.0%	-2.6	R
Dec-15	94	137	68.6%	71.0%	-2.4	R
Jan-16	94	133	70.7%	71.0%	-0.3	G
Feb-16	91	131	69.5%	71.0%	-1.5	G
Mar-16	91	130	70.0%	71.0%	-1.0	G
Apr-16	89	129	69.0%	71.0%	-2.0	G
May-16	86	129	66.7%	71.0%	-4.3	G
Jun-16	89	131	67.9%	71.0%	-3.1	G
Jul-16	88	130	67.7%	71.0%	-3.3	G
Aug-16	86	130	66.2%	71.0%	-4.8	G

CSC Commentary

This figure is still below our target and although performance has very slightly gone down, this is only by 0.2%. This is due mainly to a small number of long term placements having been disrupted recently. Many of these are due to some of the challenging behavioural issues, particularly amongst young people in their early teens. Workers have been reminded about the processes to implement for maintaining fragile placements and try to support these with additional visits and access to support services, such as therapeutic input, in order to sustain the placement. However, the demand for foster care placements is constantly increasing and carers can be reluctant to maintain difficult placements when they know that having another placement will not involve a protracted wait. Managers will ensure that this remains an area of focus in team meetings in order to continue to implement measures to drive up performance.

Definition

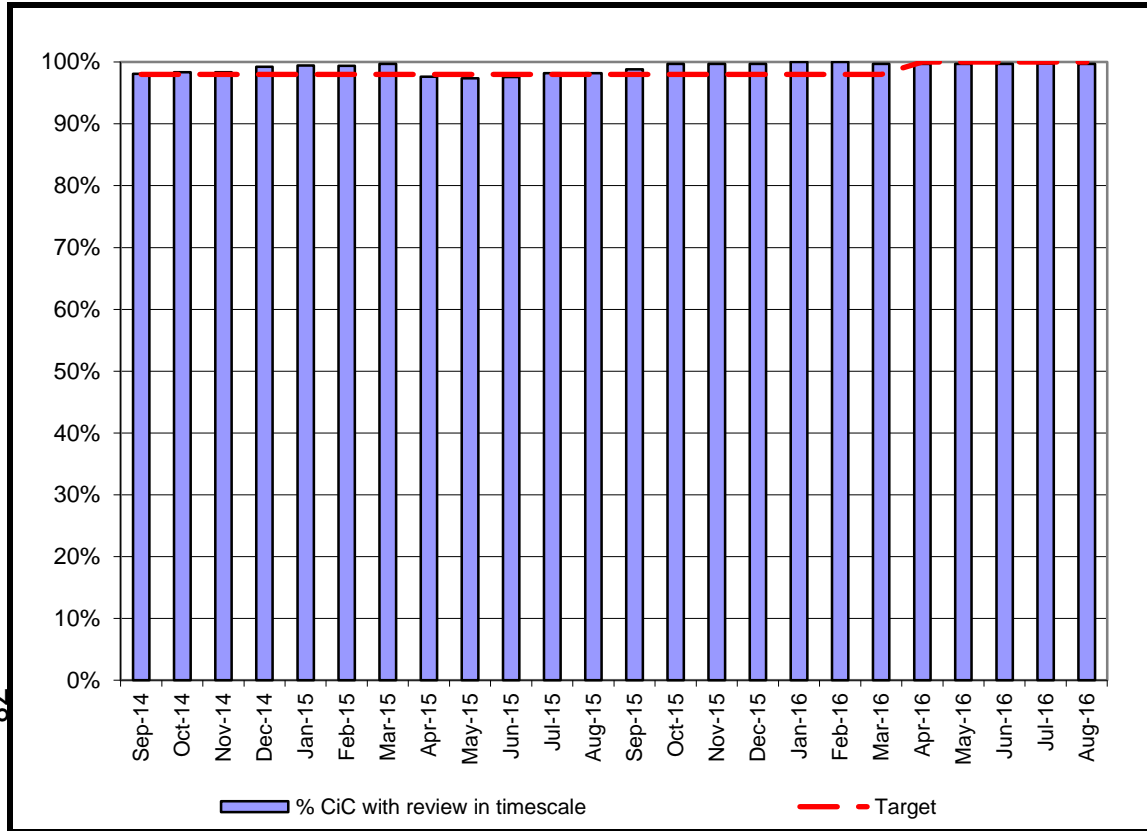
The percentage of children in care aged under 16 who had been in care continuously for at least 2.5 years who were living in the same placement for at least 2 years, or are placed for adoption and their adoptive placement together with their previous placement together last for at least 2 years.

Population for denominator: 46600



Year	PCC Result	SN Result	ENG Result
2012-13	66.7%	69.4%	67.3%
2013-14	73.0%	69.1%	67.0%
2014-15			

87



Month	Num.	Denom.	% CiC
Sep-14	364	371	98.1%
Oct-14	360	366	98.4%
Nov-14	363	369	98.4%
Dec-14	386	389	99.2%
Jan-15	345	347	99.4%
Feb-15	337	339	99.4%
Mar-15	342	343	99.7%
Apr-15	330	338	97.6%
May-15	330	339	97.3%
Jun-15	322	330	97.6%
Jul-15	326	332	98.2%
Aug-15	331	337	98.2%
Sep-15	330	334	98.8%
Oct-15	326	327	99.7%
Nov-15	335	336	99.7%
Dec-15	344	345	99.7%
Jan-16	329	329	100.0%
Feb-16	333	333	100.0%
Mar-16	344	345	99.7%
Apr-16	347	348	99.7%
May-16	350	351	99.7%
Jun-16	347	348	99.7%
Jul-16	365	366	99.7%
Aug-16	355	356	99.7%

Target	Variance	RAG
98.0%	0.1	A
98.0%	0.4	A
98.0%	0.4	A
98.0%	1.2	A
98.0%	1.4	A
98.0%	1.4	A
98.0%	1.7	A
98.0%	-0.4	R
98.0%	-0.7	R
98.0%	-0.4	R
98.0%	0.2	A
98.0%	0.2	A
98.0%	0.8	A
98.0%	1.7	A
98.0%	1.7	A
98.0%	1.7	A
98.0%	2.0	G
98.0%	2.0	G
98.0%	1.7	A
100.0%	-0.3	A
100.0%	-0.3	A
100.0%	-0.3	A
100.0%	-0.3	A
100.0%	-0.3	A

CSC Commentary

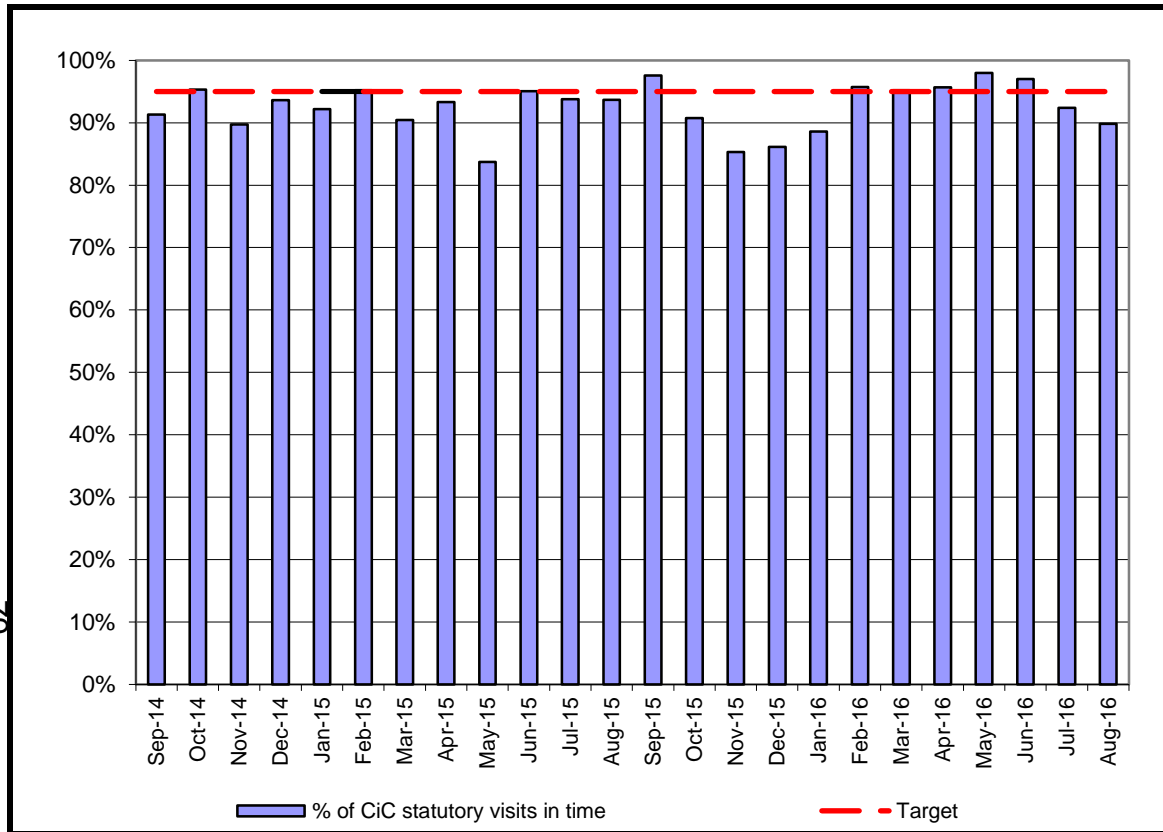
This indicator is measured on a rolling 12 month basis and following a small dip in performance in March, this will continue to be 0.3% below the 100% target for this current counting period. However, performance has remained steady, evidencing that statutory reviews remain an area of priority and that there have been no further reviews missed, despite an increase in the number of children requiring reviews.

Definition

The percentage of Looked after children for at least one month, whose case was reviewed within the required timescales.
The denominator is children who are LAC for at least one month at the end of the reporting month. The numerator is the number of children who have not had a review in the last 12 months recorded as outside of timescale.

G = 100% **A > 98%** **R < 98%**

67



Month	Num.	Denom.	% of
Sep-14	325	356	91.3%
Oct-14	346	363	95.3%
Nov-14	323	360	89.7%
Dec-14	337	360	93.6%
Jan-15	319	346	92.2%
Feb-15	317	333	95.2%
Mar-15	302	334	90.4%
Apr-15	307	329	93.3%
May-15	278	332	83.7%
Jun-15	308	324	95.1%
Jul-15	300	320	93.8%
Aug-15	311	332	93.7%
Sep-15	320	328	97.6%
Oct-15	295	325	90.8%
Nov-15	285	334	85.3%
Dec-15	286	332	86.1%
Jan-16	287	324	88.6%
Feb-16	313	327	95.7%
Mar-16	318	334	95.2%
Apr-16	333	348	95.7%
May-16	339	346	98.0%
Jun-16	327	337	97.0%
Jul-16	327	354	92.4%
Aug-16	317	353	89.8%

Target	Variance	RAG
95.0%	-3.7	A
95.0%	0.3	G
95.0%	-5.3	R
95.0%	-1.4	A
95.0%	-2.8	A
95.0%	0.2	G
95.0%	-4.6	G
95.0%	-1.7	A
95.0%	-11.3	R
95.0%	0.1	G
95.0%	-1.3	A
95.0%	-1.3	A
95.0%	2.6	G
95.0%	-4.2	A
95.0%	-9.7	R
95.0%	-8.9	R
95.0%	-6.4	R
95.0%	0.7	G
95.0%	0.2	G
95.0%	0.7	G
95.0%	3.0	G
95.0%	2.0	G
95.0%	-2.6	A
95.0%	-5.2	R

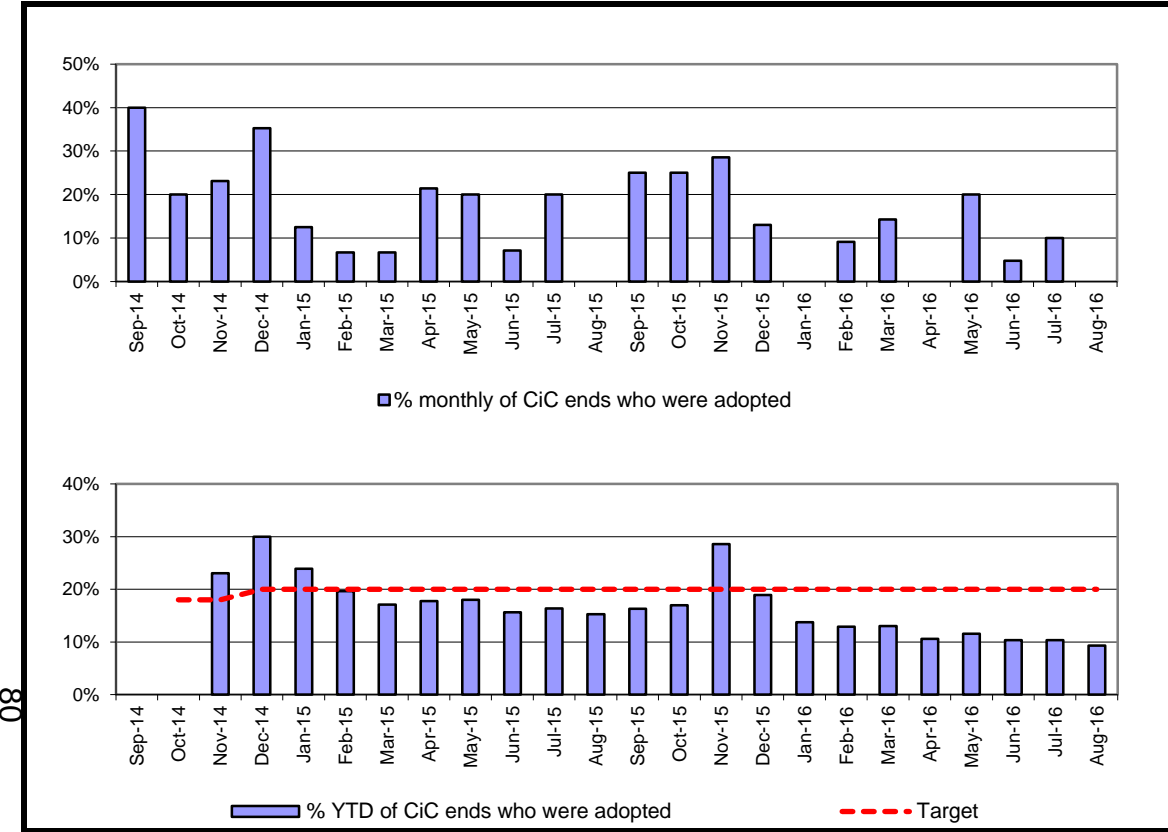
CSC Commentary

Statutory visits within timescale have had a decrease in performance this month, which has been impacted by worker absence due to both illness and staff vacancies. Another factor is the beginning of the school holiday period, with some foster carers going away on vacation, complicating the statutory visits schedule. In addition, some older teenagers continue to not co-operating with visiting requirements, absenting themselves from placement when visits are planned in advance. However, managers continue to remind workers of the expectations in ensuring full compliance with visits and that they are planned ahead of the actual date to allow for rearrangments to be made within the minimum time period allowed.

Definition

Of all Children in Care that have been looked after for more than 6 weeks, the number and percentage of visits that were completed within the 6 week deadline (or within three months for those Children in Care that have been looked after for more than 12 months and whose placement is deemed to be permanent). This is snapshot data taken at the month end.

G = 95% **A > 90%** **R < 90%**



Month	Adop.	CiC Ends	% monthly	% YTD
Sep-14	4	10	40.0%	0.0%
Oct-14	3	15	20.0%	0.0%
Nov-14	3	13	23.1%	23.1%
Dec-14	6	17	35.3%	30.0%
Jan-15	2	16	12.5%	23.9%
Feb-15	1	15	6.7%	19.7%
Mar-15	1	15	6.7%	17.1%
Apr-15	3	14	21.4%	17.8%
May-15	2	10	20.0%	18.0%
Jun-15	2	28	7.1%	15.6%
Jul-15	5	25	20.0%	16.3%
Aug-15	0	11	0.0%	15.2%
Sep-15	5	20	25.0%	16.3%
Oct-15	4	16	25.0%	17.0%
Nov-15	4	14	28.6%	28.6%
Dec-15	3	23	13.0%	18.9%
Jan-16	0	14	0.0%	13.7%
Feb-16	1	11	9.1%	12.9%
Mar-16	1	7	14.3%	13.0%
Apr-16	0	16	0.0%	10.6%
May-16	2	10	20.0%	11.6%
Jun-16	1	21	4.8%	10.3%
Jul-16	1	10	10.0%	10.3%
Aug-16	0	14	0.0%	9.3%

Target	Var	RAG
18.0%	-18.0	A
18.0%	-18.0	G
18.0%	5.1	A
20.0%	10.0	A
20.0%	3.9	R
20.0%	-0.3	R
20.0%	-2.9	R
20.0%	-2.2	A
20.0%	-2.0	G
20.0%	-4.4	R
20.0%	-3.7	G
20.0%	-4.8	R
20.0%	-3.7	A
20.0%	-3.0	A
20.0%	8.6	A
20.0%	-1.1	R
20.0%	-6.3	R
20.0%	-7.1	R
20.0%	-7.0	R
20.0%	-9.4	R
20.0%	-8.4	G
20.0%	-9.7	R
20.0%	-9.7	R
20.0%	-10.7	R

YTD:	22	176	--	12.5%
-------------	-----------	------------	-----------	--------------

20.0%	-7.5	A
--------------	-------------	----------

CSC Commentary

The percentage of children who ceased to be in care as a result of an adoption order is within 1% of the performance last year. This demonstrates good performance in the context of a decreasing trend of adoption orders nationally. Given the national context of a growth in SGOs and a decline in adoption orders the RAG rating will need adjusting for this indicator.

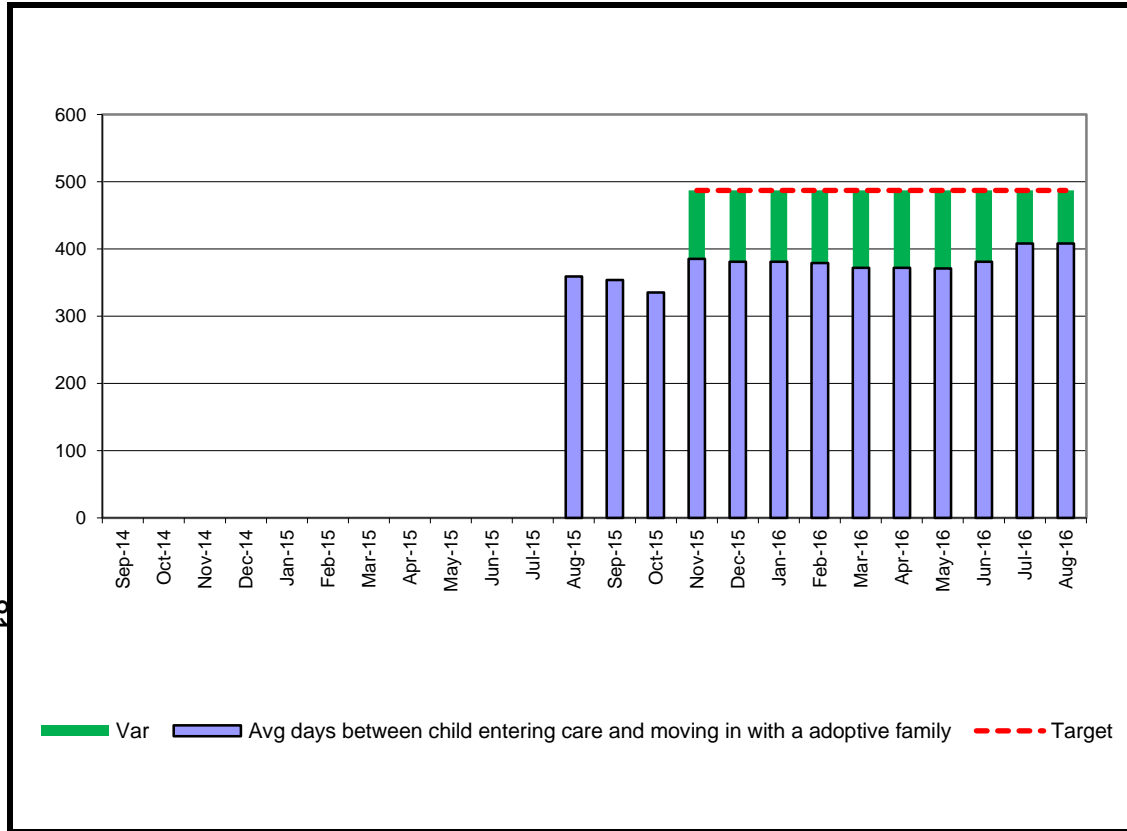
Definition

The number of children adopted as a percentage of the number of children who ceased to be in care

G =20%	A >15%	R < 15%
---------------	------------------	-------------------

Year	PCC Result	SN Result	ENG Result
2012-13	13.0%	19.0%	14.0%
2013-14	18.0%	22.4%	17.0%
2014-15	19.0%	24.0%	17.0%

08



Month	Avg days
Sep-14	
Oct-14	
Nov-14	
Dec-14	
Jan-15	
Feb-15	
Mar-15	
Apr-15	
May-15	
Jun-15	
Jul-15	
Aug-15	359
Sep-15	354
Oct-15	335
Nov-15	385
Dec-15	381
Jan-16	381
Feb-16	379
Mar-16	372
Apr-16	372
May-16	371
Jun-16	381
Jul-16	408
Aug-16	408

Month	Target	Var	RAG
Sep-14		0	
Oct-14		0	
Nov-14		0	
Dec-14		0	
Jan-15		0	
Feb-15		0	
Mar-15		0	
Apr-15		0	
May-15		0	
Jun-15		0	
Jul-15		0	
Aug-15		359	
Sep-15		354	
Oct-15		335	
Nov-15	487.0	-102	G
Dec-15	487.0	-106	G
Jan-16	487.0	-106	G
Feb-16	487.0	-108	G
Mar-16	487.0	-115	G
Apr-16	487.0	-115	G
May-16	487.0	-116	G
Jun-16	487.0	-106	G
Jul-16	487.0	-79	G
Aug-16	487.0	-79	G

CSC Commentary

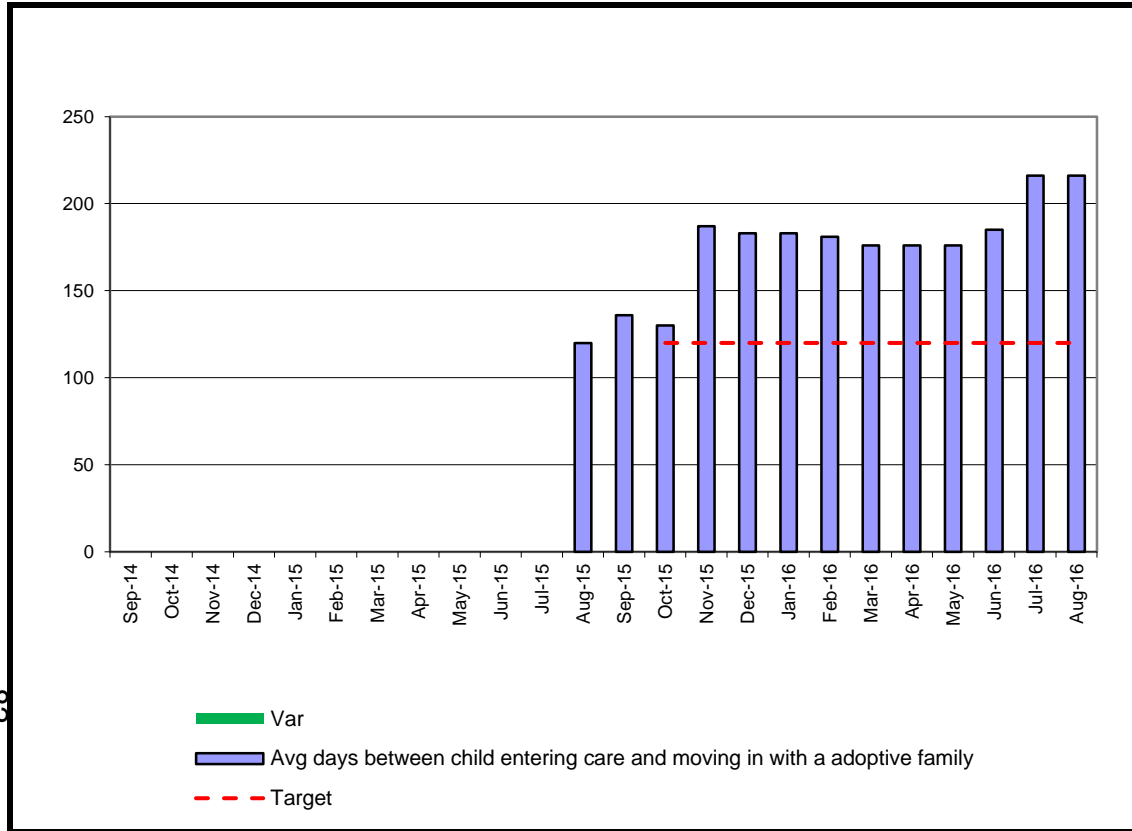
This indicator evidences good and sustained performance.

Definition:

The average days between child entering care and moving in with a adoptive family and the average days between court agreeing adoption and LA approving a match. The monthly figures represent the cumulative total for the year to date.

G <=487 **A >** **R**

Year	ER Result	ENG Result
2012-13		
2013-14		
2014-15	492.5	



Month	Avg days
Sep-14	
Oct-14	
Nov-14	
Dec-14	
Jan-15	
Feb-15	
Mar-15	
Apr-15	
May-15	
Jun-15	
Jul-15	
Aug-15	120
Sep-15	136
Oct-15	130
Nov-15	187
Dec-15	183
Jan-16	183
Feb-16	181
Mar-16	176
Apr-16	176
May-16	176
Jun-16	185
Jul-16	216
Aug-16	216

Target	Var	RAG
	0.0	
	0.0	
	0.0	
	0.0	
	0.0	
	0.0	
	0.0	
	0.0	
	0.0	
	0.0	
	0.0	
	0.0	
	120.0	G
	136.0	A
120.0	10.0	R
120.0	67.0	G
120.0	63.0	A
120.0	63.0	G
120.0	61.0	G
120.0	56.0	G
120.0	56.0	A
120.0	56.0	A
120.0	65.0	R
120.0	96.0	R
120.0	96.0	R

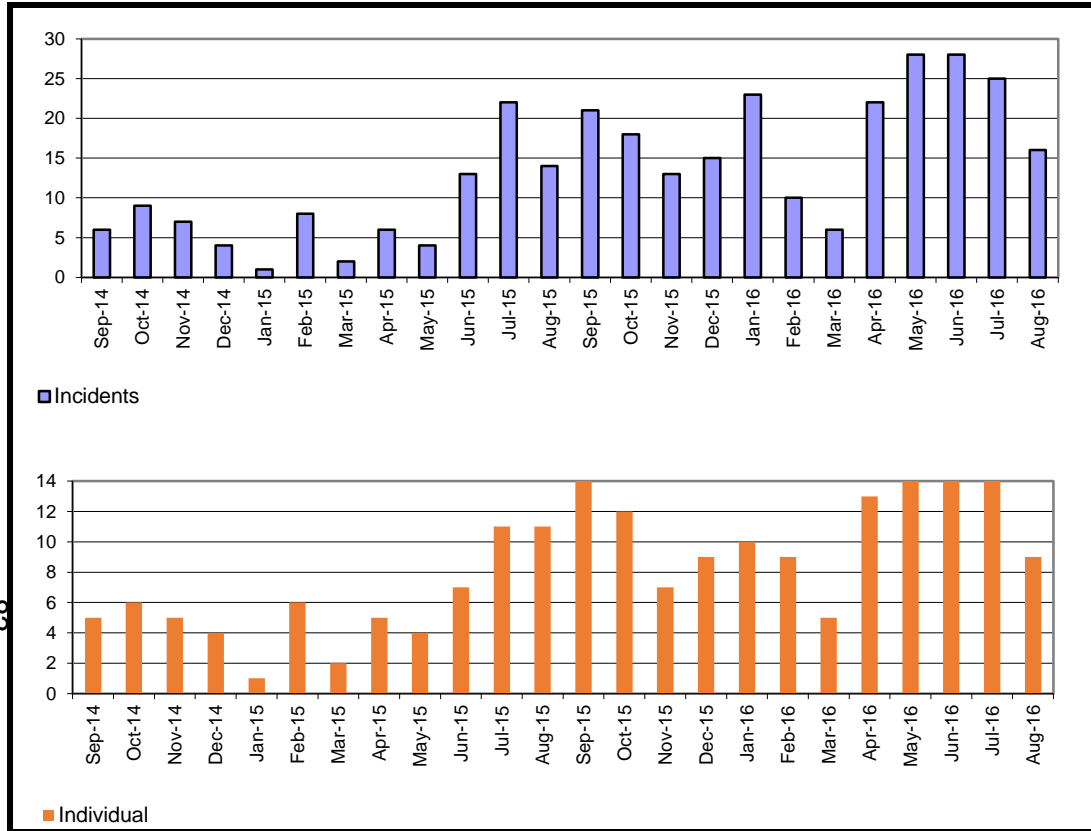
82

This indicator appears not to have been met however it is a more complex picture. As it measures the period from placement order to match it does not take account of children who have been placed with their adopters under fostering for adoption arrangements. 11 children who were adopted in the period had been previously fostered by their adopters. There remain some children however, who have waited a considerable time to move in with their adoptive family. Typically these children have been harder to place as they have additional needs or are part of a sibling group. Closer scrutiny of this indicator demonstrates good performance in comparison with strong performance last year. 236 days was the average between a child entering care and moving in with their adoptive family for 2014/15. 2015/16 performance is 216.

Definition
The average days between child entering care and moving in with a adoptive family and the average days between court agreeing adoption and LA approving a match. The monthly figures represent the cumulative total for the

G ≤120 **A** > **R** <

Year	PCC Result	ER Result	ENG Result
2012-13			
2013-14			
2014-15	304.0	220.0	



Month	Incidents	Individual
Sep-14	6	5
Oct-14	9	6
Nov-14	7	5
Dec-14	4	4
Jan-15	1	1
Feb-15	8	6
Mar-15	2	2
Apr-15	6	5
May-15	4	4
Jun-15	13	7
Jul-15	22	11
Aug-15	14	11
Sep-15	21	16
Oct-15	18	12
Nov-15	13	7
Dec-15	15	9
Jan-16	23	10
Feb-16	10	9
Mar-16	6	5
Apr-16	22	13
May-16	28	16
Jun-16	28	14
Jul-16	25	16
Aug-16	16	9

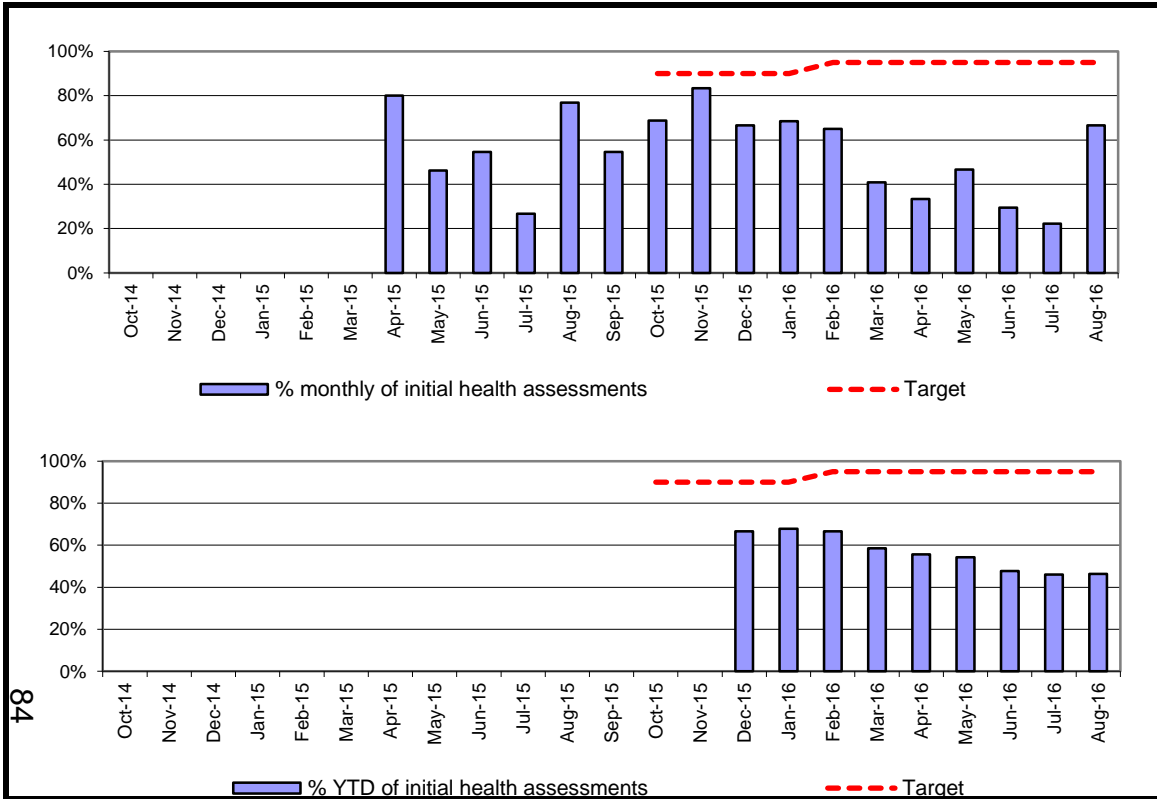
CSC Commentary

This indicator has decreased slightly, which shows an improving picture, especially given that preventing young people from going missing over the summer months is a greater challenge than usual. The number of young people going missing has increased very slightly but workers are aware of the recently revised missing procedure and are good at following this up, which ensures that appropriate action is taken in response to individual incidents.

Definition

All missing incidents (including incidents occurring to CiC placed outside of Peterborough) for Children in Care recorded in the month; individuals is the number of children this involves (as some children may go missing more than once).





Month	Init.HA	CiC St	%	% YTD	Target	Var	RAG
Oct-14							
Nov-14							
Dec-14							
Jan-15							
Feb-15							
Mar-15							
Apr-15	8	10	80.0%	0.0%			
May-15	6	13	46.2%	0.0%			
Jun-15	12	22	54.5%	0.0%			
Jul-15	4	15	26.7%	0.0%			
Aug-15	10	13	76.9%	0.0%			
Sep-15	6	11	54.5%	0.0%			
Oct-15	11	16	68.8%	0.0%	90.0%	-90.0	R
Nov-15	10	12	83.3%	0.0%	90.0%	-90.0	R
Dec-15	6	9	66.7%	66.7%	90.0%	-23.3	R
Jan-16	13	19	68.4%	67.9%	90.0%	-22.1	R
Feb-16	13	20	65.0%	66.7%	95.0%	-28.3	R
Mar-16	9	22	40.9%	58.6%	95.0%	-36.4	R
Apr-16	3	9	33.3%	55.7%	95.0%	-39.3	R
May-16	7	15	46.7%	54.3%	95.0%	-40.7	R
Jun-16	10	34	29.4%	47.7%	95.0%	-47.3	R
Jul-16	2	9	22.2%	46.0%	95.0%	-49.0	R
Aug-16	2	3	66.7%	46.4%	95.0%	-48.6	R

YTD:	92	179	--	51.4%	95.0%	-43.6	R
-------------	-----------	------------	-----------	--------------	--------------	--------------	----------

CSC Commentary

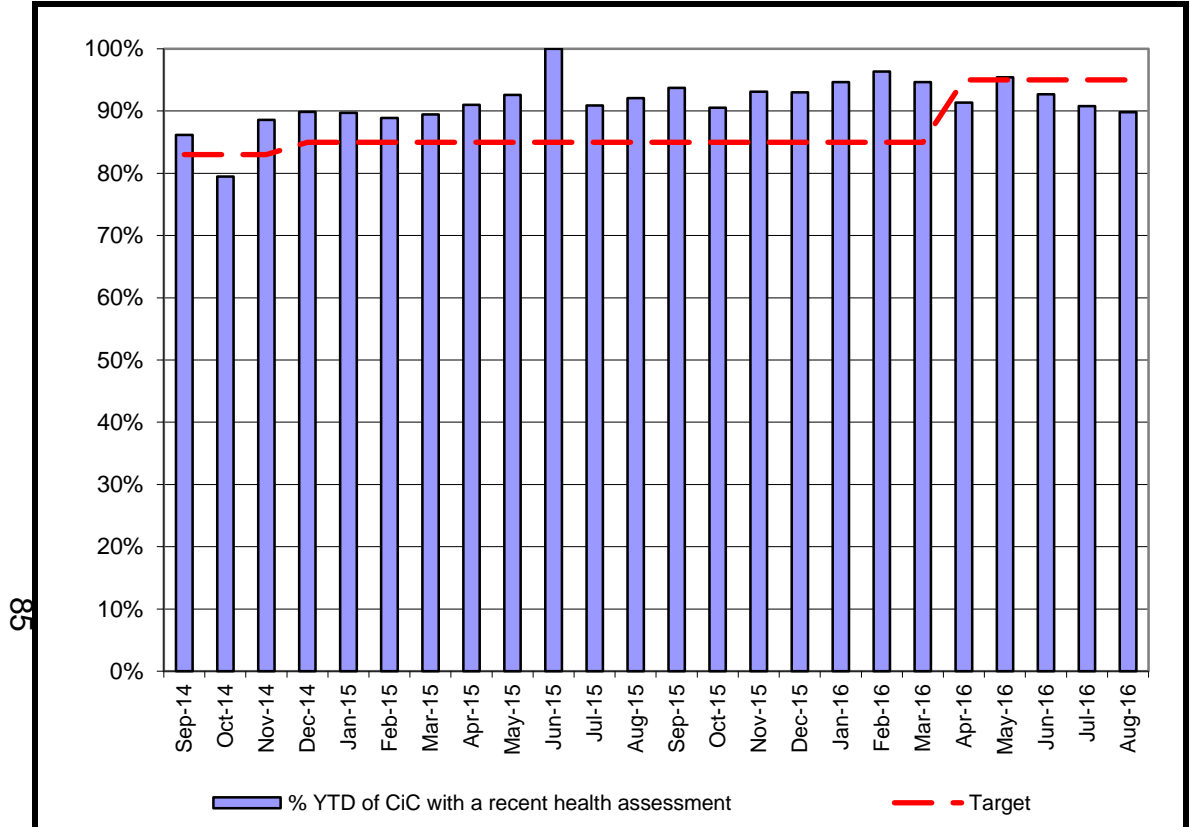
In August there were 11 IHAs scheduled, from these 4 were completed within timescales which is 37%. 6 were completed outside of timescale and 1 assessment is still required. Of the 7 there was a family of 4 children, a mother and baby placement who both required assessment and 1 young person placed out of area.

Therefore whilst accepting that 37% of assessments completed in timescale is not strong performance this indicator is effected by only 3 referrals sent to health late.

Definition

The number of children becoming looked after that have an initial health assessment recorded within 20 working days of the child entering care. The number of children is measured one month in arrears to enable time for the 20 day period to elapse and excludes cases where the episode of care was closed within 20 days and also children entering care because they have been placed on remand (because the remand institution is responsible for completing the initial health assessment).

G >= 95%	A > 85 -95%	R < 85%
--------------------	-----------------------	-------------------



Month	Num.	Denom.	% YTD	Target	Variance	RAG
Sep-14	230	267	86.1%	83.0%	3.1	A
Oct-14	205	258	79.5%	83.0%	-3.5	R
Nov-14	232	262	88.5%	83.0%	5.5	A
Dec-14	239	266	89.8%	85.0%	4.8	A
Jan-15	227	253	89.7%	85.0%	4.7	A
Feb-15	224	252	88.9%	85.0%	3.9	A
Mar-15	229	256	89.5%	85.0%	4.5	A
Apr-15	232	255	91.0%	85.0%	6.0	A
May-15	237	256	92.6%	85.0%	7.6	A
Jun-15	253	253	100.0%	85.0%	15.0	G
Jul-15	219	241	90.9%	85.0%	5.9	A
Aug-15	221	240	92.1%	85.0%	7.1	A
Sep-15	224	239	93.7%	85.0%	8.7	A
Oct-15	210	232	90.5%	85.0%	5.5	A
Nov-15	216	232	93.1%	85.0%	8.1	A
Dec-15	212	228	93.0%	85.0%	8.0	A
Jan-16	211	223	94.6%	85.0%	9.6	A
Feb-16	210	218	96.3%	85.0%	11.3	G
Mar-16	212	224	94.6%	85.0%	9.6	A
Apr-16	211	231	91.3%	95.0%	-3.7	A
May-16	230	241	95.4%	95.0%	0.4	G
Jun-16	215	232	92.7%	95.0%	-2.3	A
Jul-16	207	228	90.8%	95.0%	-4.2	A
Aug-16	211	235	89.8%	95.0%	-5.2	A

CSC Commentary

Performance has slipped again this month that has consistent factors that effect this indicator: The first is a significant number of older teenagers who continue to refuse assessments despite repeated efforts by staff to get them to engage with this process and the other is the lengthy delay in the completed health assessments being processed by Health, sent over to CSCc and then loaded onto our LL system for them to count in our performance figures. Social workers will continue to attempt to get young people to attend for their health assessment and the HoS's with Team Managers will look into the factors causing delay in recoding with a view to reducing these.

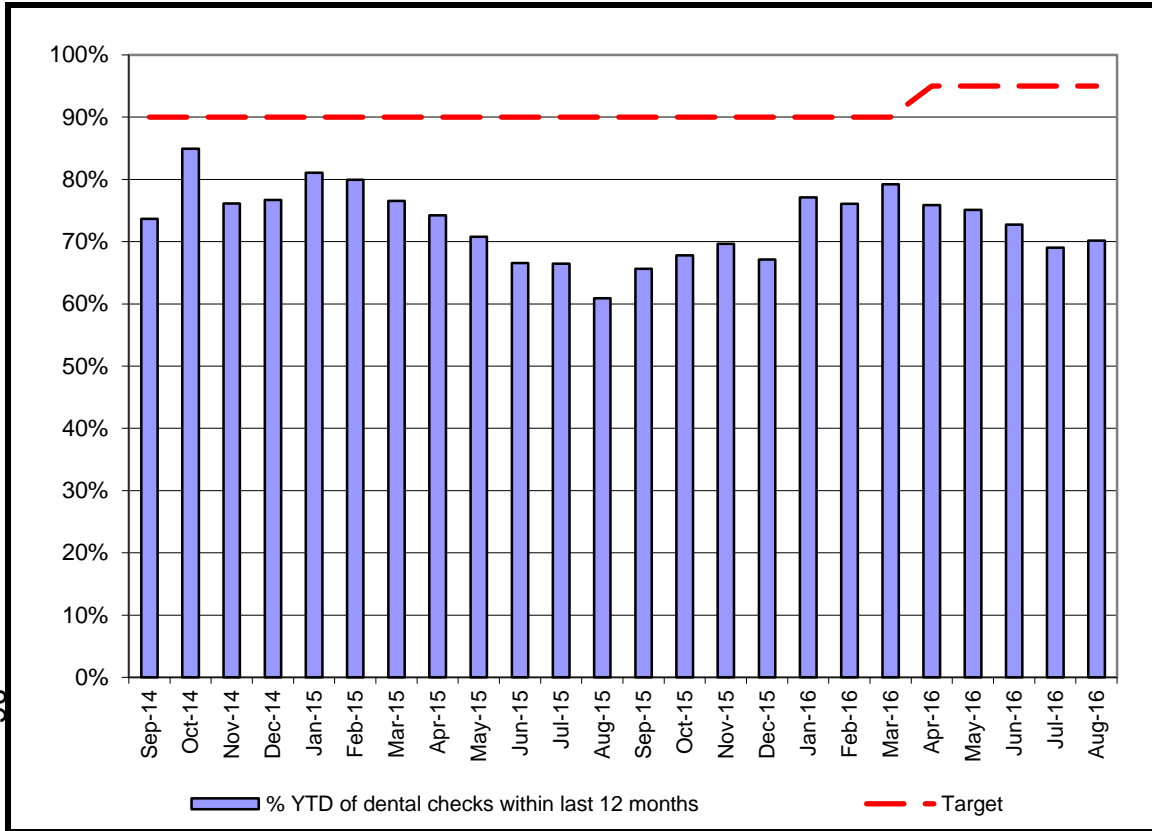
Definition

Of the children who had been in care for at least 12 months the proportion who had an annual health assessment during the previous 12 months.

G >= 95%	A > 85%	R < 85%
----------	---------	---------

Year	PCC Result	SN Result	ENG Result
2012-13	85.4%	85.0%	87.3%
2013-14	93.9%	89.1%	88.4%
2014 -15			

98



Month	Num.	Denom.	% YTD	Target	Variance	RAG
Sep-14	232	315	73.7%	90.0%	-16.3	R
Oct-14	265	312	84.9%	90.0%	-5.1	R
Nov-14	236	310	76.1%	90.0%	-13.9	R
Dec-14	237	309	76.7%	90.0%	-13.3	R
Jan-15	240	296	81.1%	90.0%	-8.9	R
Feb-15	231	289	79.9%	90.0%	-10.1	R
Mar-15	225	294	76.5%	90.0%	-13.5	R
Apr-15	213	287	74.2%	90.0%	-15.8	R
May-15	206	291	70.8%	90.0%	-19.2	R
Jun-15	195	293	66.6%	90.0%	-23.4	R
Jul-15	194	292	66.4%	90.0%	-23.6	R
Aug-15	176	289	60.9%	90.0%	-29.1	R
Sep-15	191	291	65.6%	90.0%	-24.4	R
Oct-15	196	289	67.8%	90.0%	-22.2	R
Nov-15	204	293	69.6%	90.0%	-20.4	R
Dec-15	198	295	67.1%	90.0%	-22.9	R
Jan-16	222	288	77.1%	90.0%	-12.9	R
Feb-16	229	301	76.1%	90.0%	-13.9	R
Mar-16	244	308	79.2%	90.0%	-10.8	R
Apr-16	239	315	75.9%	95.0%	-19.1	R
May-16	235	313	75.1%	95.0%	-19.9	R
Jun-16	235	323	72.8%	95.0%	-22.2	R
Jul-16	223	323	69.0%	95.0%	-26.0	R
Aug-16	221	315	70.2%	95.0%	-24.8	R

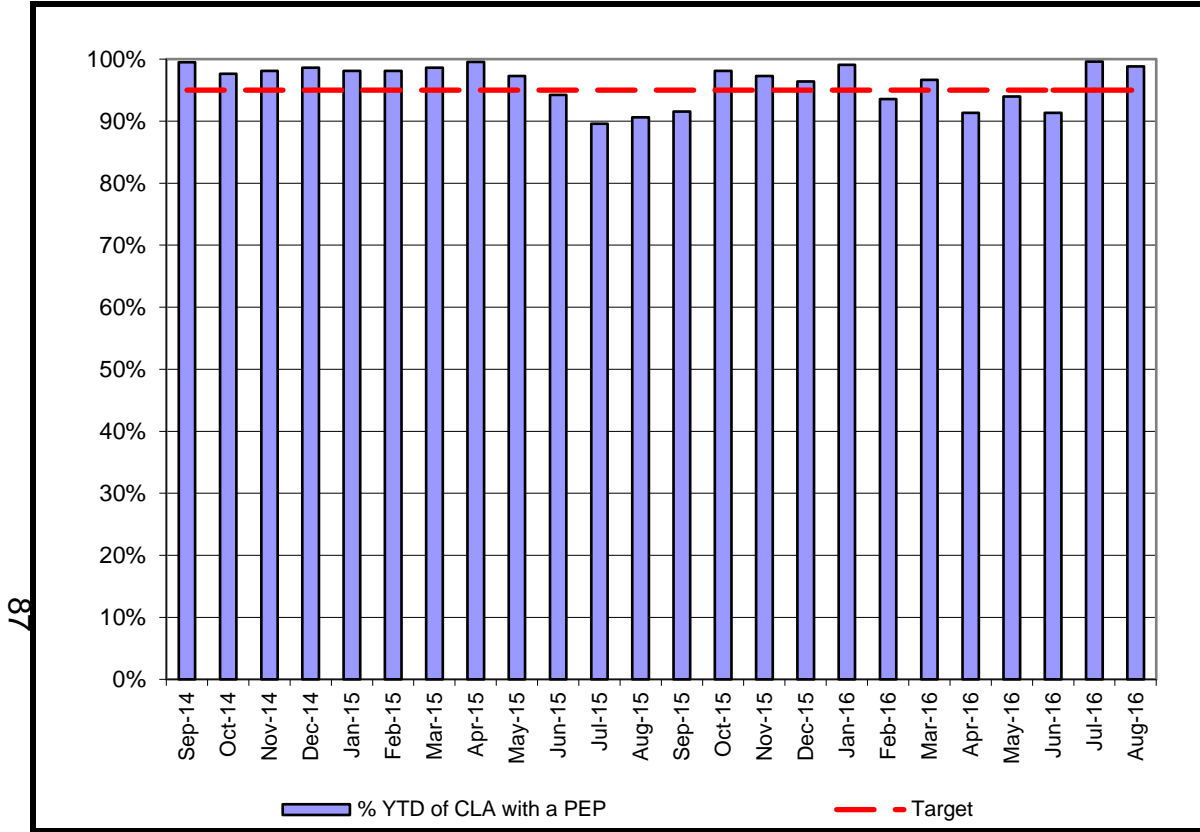
CSC Commentary

This continues the downward trend since March 2016, however a small improvement this month. This performance is due to a number of teenage children who consistently refuse dental check and a number of unaccompanied minors who have been registered with dentists but who have significant waiting time delays before they can be seen for check-ups. The HoS will look into the reasons for the current co-hort of children in care who have not had their routine dental checks and report back on this to the CIC Board. However, teams will continue to focus on those young people who's dental checks are at 11 months to try and avoid the figure slipping further downward.

Definition

The percentage of children looked after who have had a dental check within the previous 12 months.
 Children looked after aged between 3 and 17 years old that have a dental check recorded on Liquidlogic that was completed within the previous 12 months. The denominator is the number of children looked after (3 - 17) at the month end.

G >= 95%	A > 90%	R < 90%
----------	---------	---------



Month	Num.	Denom.	% YTD
Sep-14	203	204	99.5%
Oct-14	207	212	97.6%
Nov-14	209	213	98.1%
Dec-14	211	214	98.6%
Jan-15	209	213	98.1%
Feb-15	209	213	98.1%
Mar-15	213	216	98.6%
Apr-15	213	214	99.5%
May-15	214	220	97.3%
Jun-15	212	225	94.2%
Jul-15	206	230	89.6%
Aug-15	193	213	90.6%
Sep-15	195	213	91.5%
Oct-15	206	210	98.1%
Nov-15	215	221	97.3%
Dec-15	214	222	96.4%
Jan-16	216	218	99.1%
Feb-16	217	232	93.5%
Mar-16	232	240	96.7%
Apr-16	222	243	91.4%
May-16	233	248	94.0%
Jun-16	232	254	91.3%
Jul-16	253	254	99.6%
Aug-16	250	253	98.8%

Target	Variance	RAG
95.0%	4.5	G
95.0%	2.6	G
95.0%	3.1	G
95.0%	3.6	G
95.0%	3.1	G
95.0%	3.1	G
95.0%	3.6	G
95.0%	4.5	G
95.0%	2.3	G
95.0%	-0.8	A
95.0%	-5.4	R
95.0%	-4.4	R
95.0%	-3.5	A
95.0%	3.1	G
95.0%	2.3	G
95.0%	1.4	G
95.0%	4.1	G
95.0%	-1.5	A
95.0%	1.7	G
95.0%	-3.6	A
95.0%	-1.0	A
95.0%	-3.7	A
95.0%	4.6	G
95.0%	3.8	G

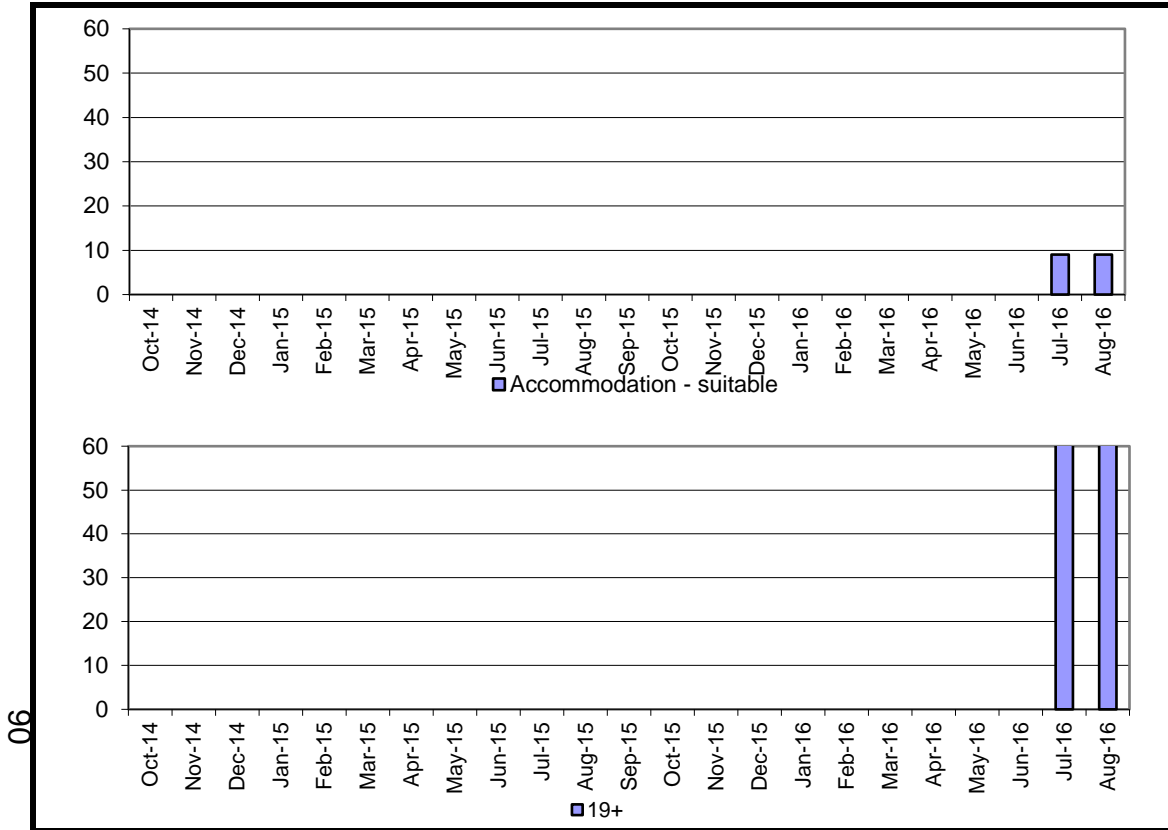
CSC Commentary

Three children are recorded as not having PEPs in August . These came into care on 8th,22nd,and 30th August . A PEP meeting was held on 6th September for the YP who came into care on 8th August - the first opportunity available when the school reopened . The other two are still within timescale for completion and will shortly be arranged .

Definition

The denominator is the number of children in care who are of school age. The numerator is of those children, the number that have a PEP added to the system.

G = >95% **A=95%-90%** **R < 90%**



Month	Accomm	19+	%	Target	Variance	RAG
Sep-14						
Oct-14						
Nov-14						
Dec-14						
Jan-15						
Feb-15						
Mar-15						
Apr-15						
May-15						
Jun-15						
Jul-15						
Aug-15						
Sep-15						
Oct-15						
Nov-15						
Dec-15						
Jan-16						
Feb-16						
Mar-16						
Apr-16						
May-16						
Jun-16						
Jul-16	9	89	10.1%			
Aug-16	9	89	10.1%			

YTD	18	178	10.1%			
------------	-----------	------------	--------------	--	--	--

CSC Commentary

This cohort includes those in custody and those who are of no fixed abode. Issues have been identified for those who have refused the option of supported accommodation and those who have had and been evicted from previous accommodation. Work is being undertaken to develop closer joint planning with our housing department to ensure all options have been considered.

Definition
Former relevant care leavers open to the service aged 19, 20 or 21 and the proportion of those who declared themselves to be Not in Suitable Accommodation

G =TBC **A =TBC** **R=TBC**

Year	ER Result	SN Res	ENG Result
2012-13		-	-
2013-14		-	-
2014-15		-	-